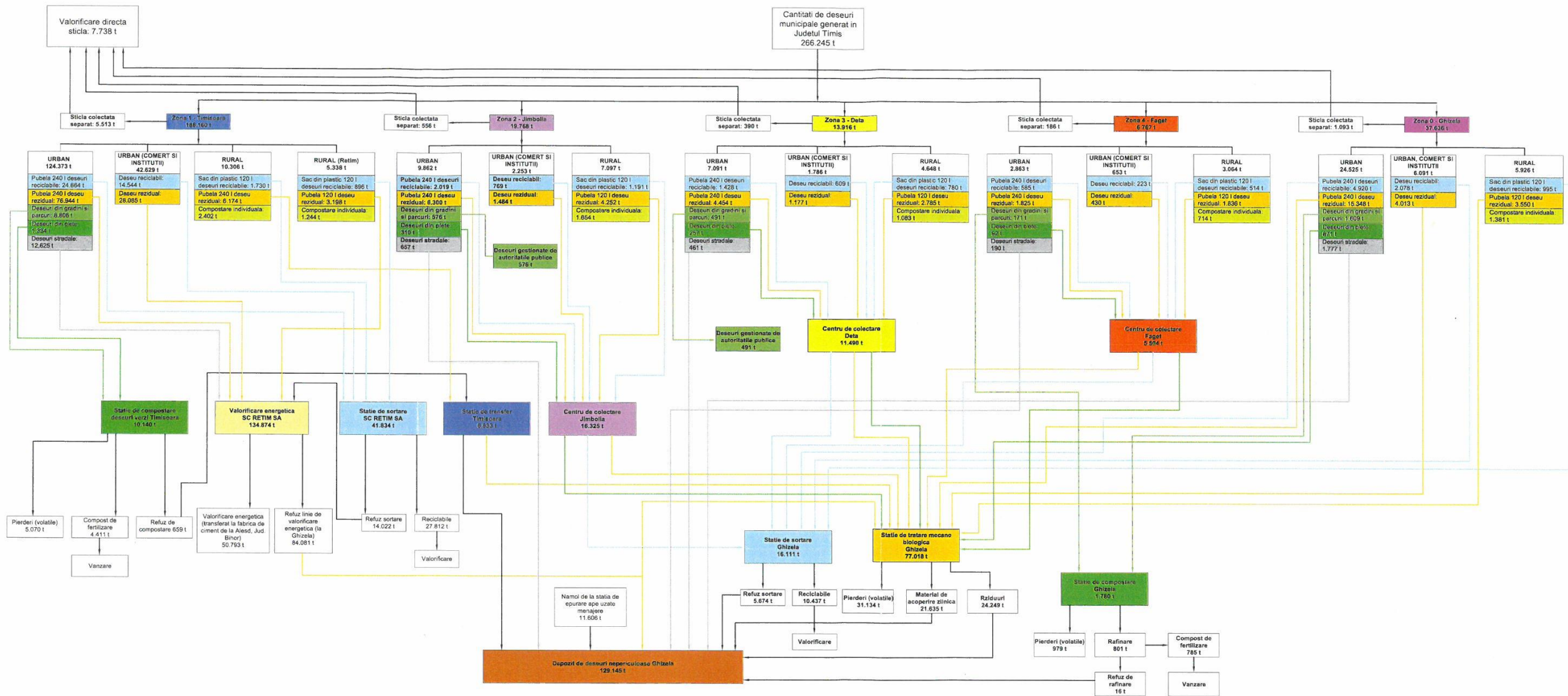


ANEXA 4.

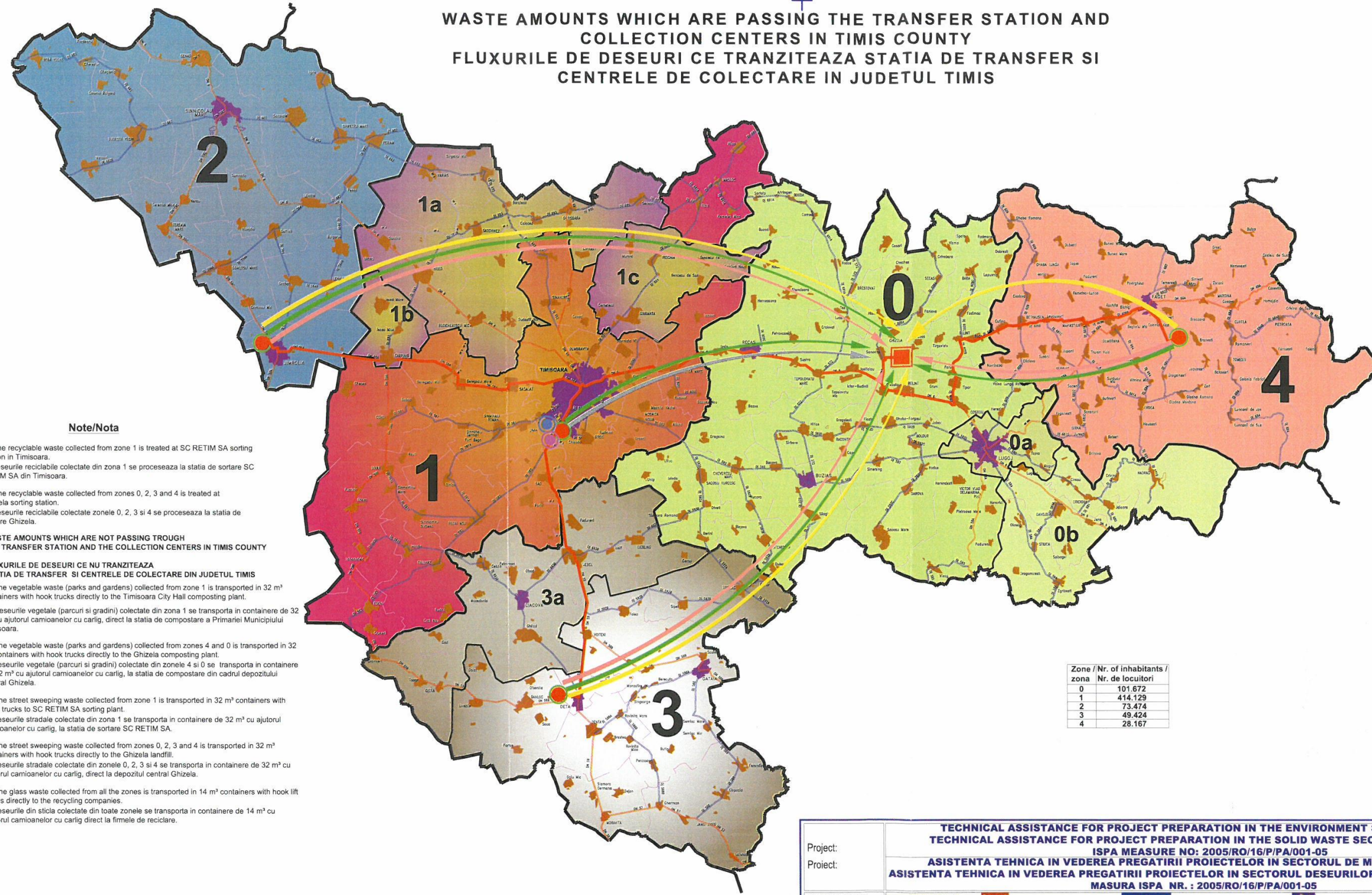
**SCHEMELE FLUXURILOR DE DESEURI PE ZONELE DE
COLECTARE ALE JUDETULUI TIMIS**

FLUXUL DESEURILOR IN JUDETUL TIMIS IN ANUL 2013



Project:	TECHNICAL ASSISTANCE FOR PROJECT PREPARATION IN THE ENVIRONMENT SECTOR - ROMANIA		
Project:	TECHNICAL ASSISTANCE FOR PROJECT PREPARATION IN THE SOLID WASTE SECTOR - TIMIS COUNTY		
BENEFICIARY:	ISPA MEASURE NO: 2005/RO/16/P/PA/001-05		
BENEFICIAR:	ASISTENTA TEHNICA IN VEDEREA PREGATIRII PROIECTELOR IN SECTORUL DE MEDIU DIN ROMANIA		
CONSORTIUM:	MASURA ISPA NR.: 2005/RO/16/P/PA/001-05		
CONSORTIU:			
Object no.:	277 - 14 - 35 / 02.2008	Scale (Scara):	1:500.000
Drawing Title:	FLUXURILE DESEURILOR IN JUDETUL TIMIS IN ANUL 2013	Date (Data):	12. 2010
Object nr.:	277 - 14 - 35 / 02.2008	Phase (Faza):	S.F.
Titlu planse:	FLUXURILE DESEURILOR IN JUDETUL TIMIS IN ANUL 2013	Cod proiect (Code project):	No. (Nr.):
Designed (Proiectat):	teh. Marin DUMITRACHE		
Checked (Verificat):	ing. Alexandru BAY		
Project Manager (Self proiect):	ing. Alexandru BAY		
			MP-007 R 0

WASTE AMOUNTS WHICH ARE PASSING THE TRANSFER STATION AND COLLECTION CENTERS IN TIMIS COUNTY
 FLUXURILE DE DESEURI CE TRANZITEAZA STATIA DE TRANSFER SI CENTRELE DE COLECTARE IN JUDETUL TIMIS



Note/Nota

- The recyclable waste collected from zone 1 is treated at SC RETIM SA sorting station in Timisoara.
- The recyclable waste collected from zones 0, 2, 3 and 4 is treated at Ghizela sorting station.
- The vegetable waste (parks and gardens) collected from zone 1 is transported in 32 m³ containers with hook trucks directly to the Timisoara City Hall composting plant.
- The vegetable waste (parks and gardens) collected from zones 4 and 0 is transported in 32 m³ containers with hook trucks directly to the Ghizela composting plant.
- The street sweeping waste collected from zone 1 is transported in 32 m³ containers with hook trucks to SC RETIM SA sorting plant.
- The street sweeping waste collected from zones 0, 2, 3 and 4 is transported in 32 m³ containers with hook trucks directly to the Ghizela landfill.
- The glass waste collected from all the zones is transported in 14 m³ containers with hook lift trucks directly to the recycling companies.
- The waste from markets is transported in 14 m³ containers with hook lift trucks directly to the recycling companies.

Zone / Nr. of inhabitants / zona	Nr. de locuitori
0	101.672
1	414.129
2	73.474
3	49.424
4	28.167



Project:	TECHNICAL ASSISTANCE FOR PROJECT PREPARATION IN THE ENVIRONMENT SECTOR - ROMANIA TECHNICAL ASSISTANCE FOR PROJECT PREPARATION IN THE SOLID WASTE SECTOR - TIMIS COUNTY ISPA MEASURE NO: 2005/RO/16/P/PA/001-05		
Project:	ASISTENTA TEHNICA IN VEDEREA PREGATIRII PROIECTELOR IN SECTORUL DE MEDIU DIN ROMANIA ASISTENTA TEHNICA IN VEDEREA PREGATIRII PROIECTELOR IN SECTORUL DESEURILOR SOLIDE - JUDETUL TIMIS MASURA ISPA NR. : 2005/RO/16/P/PA/001-05		
BENEFICIARY:	County Council TIMIS Consiliul Judetean TIMIS	European Union Uniunea Europeana	Government of Romania Guvernul Romaniei
BENEFICIAR:			Ministry of Environment and Forests Ministerul Mediului si Padurilor
CONSORTIUM:	KOCKS INGENIERIE	ENVIROPLAN ENVIROPLAN	EPEN ENEM ROMAIR CONSULTING ROMAIR
Object no.		Scale (Scara):	Phase (Faza):
Drawing Title:	WASTE AMOUNTS WHICH ARE PASSING THE TRANSFER STATION AND COLLECTION CENTERS IN TIMIS COUNTY	1:500.000	S.F.
Object nr.		Date (Data):	No. (Nr.):
Titlul plansei:	FLUXURILE DE DESEURI CE TRANZITEAZA STATIA DE TRANSFER SI CENTRELE DE COLECTARE IN JUDETUL TIMIS	07. 2010	MP-006 R 0
Designed (Proiectat):	teh. Marin DUMITRACHE	Cod proiect (Code project):	
Checked (Verificat):	ing. Alexandru BAY	277 - 14 - 35 / 02.2008	
Project Manager (Sef proiect):	ing. Alexandru BAY		